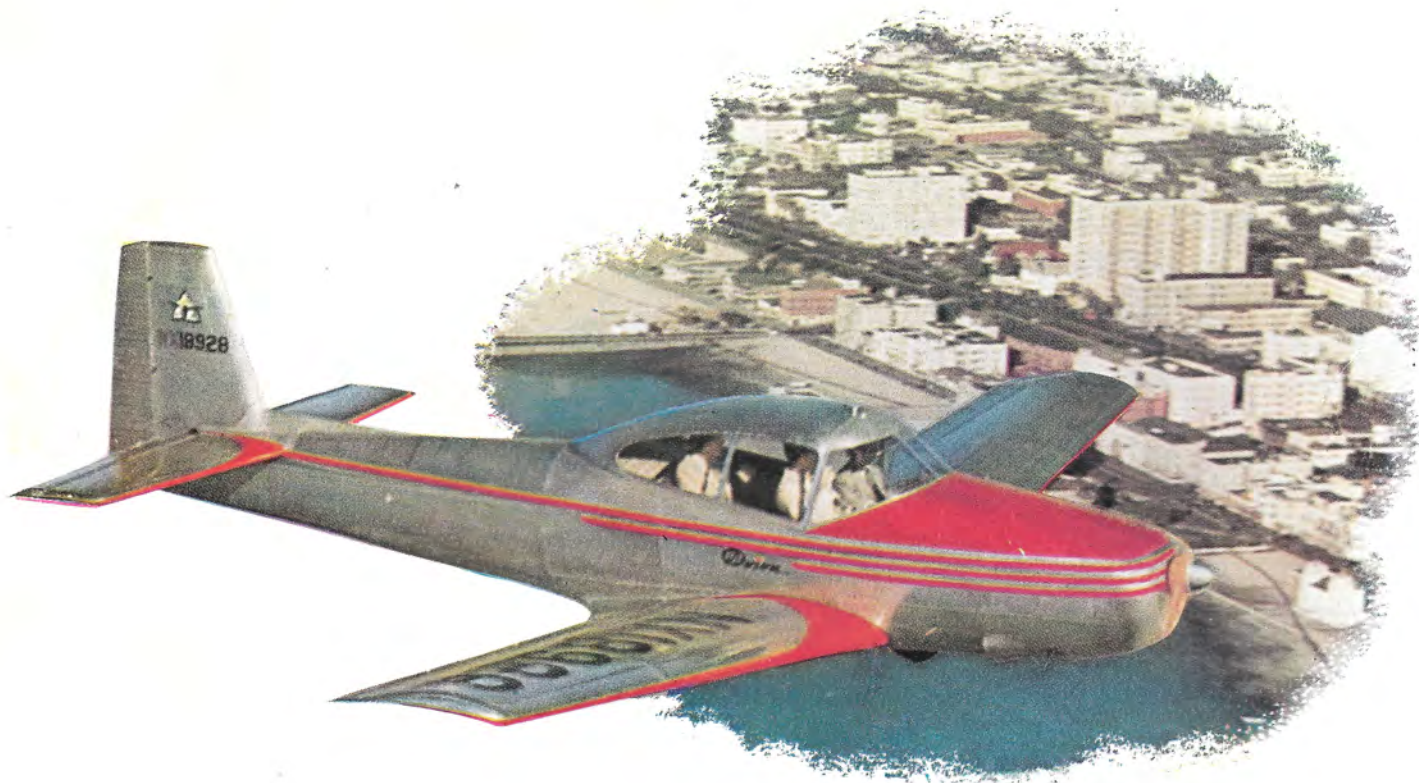


Avion
FOR BROADER HORIZONS



Navion ...

with heritage of modern aircraft advancements

The engineering organization of North American Aviation that designed the *Navion* is the same one that created the famous P-51 *Mustang* fighter...the B-25 *Mitchell* bomber...the AT-6 and SNJ *Texan* trainer.

The *Navion* is a 100% post-war airplane...taking full advantage of adaptable wartime aerodynamic advancement...meeting the requirements of both the beginner and the veteran pilot.

Built on mechanized assembly lines in the same plant with latest planes for the Army and Navy, the *Navion* is assured precision manufacture and inspection.

To learn what North American puts into the design and construction of all its planes, just ask any military pilot who has flown them...or crew man who has serviced them.





Navion... with maximum utility

The 4-place *Navion* presents a completely new conception of personal air travel. It is a modern family airplane with lightplane handling qualities and economy. To the sportsman, businessman, field engineer, or farmer—the *Navion* offers practical wings on which to greet the new Air Age.

For cross-country flying at its best, the *Navion* easily carries over a half a ton of useful load.

Pilot and 3 passengers	680 lbs.
(Average weight 170 lbs.)	
Luggage	80 lbs.
Oil (10 quarts)	20 lbs.
Fuel (40 gallons)	240 lbs.
Complete navigation instruments, night flying equipment, two-way radio, heater, etc. (approx.) . .	50 lbs.
Total useful load	1070 lbs.

When used by two people, the *Navion's* removable rear seat permits 435 lbs. of cargo in 46 cubic feet. With the further removal of one front seat, cargo can be increased to 610 lbs. in 55 cubic feet.

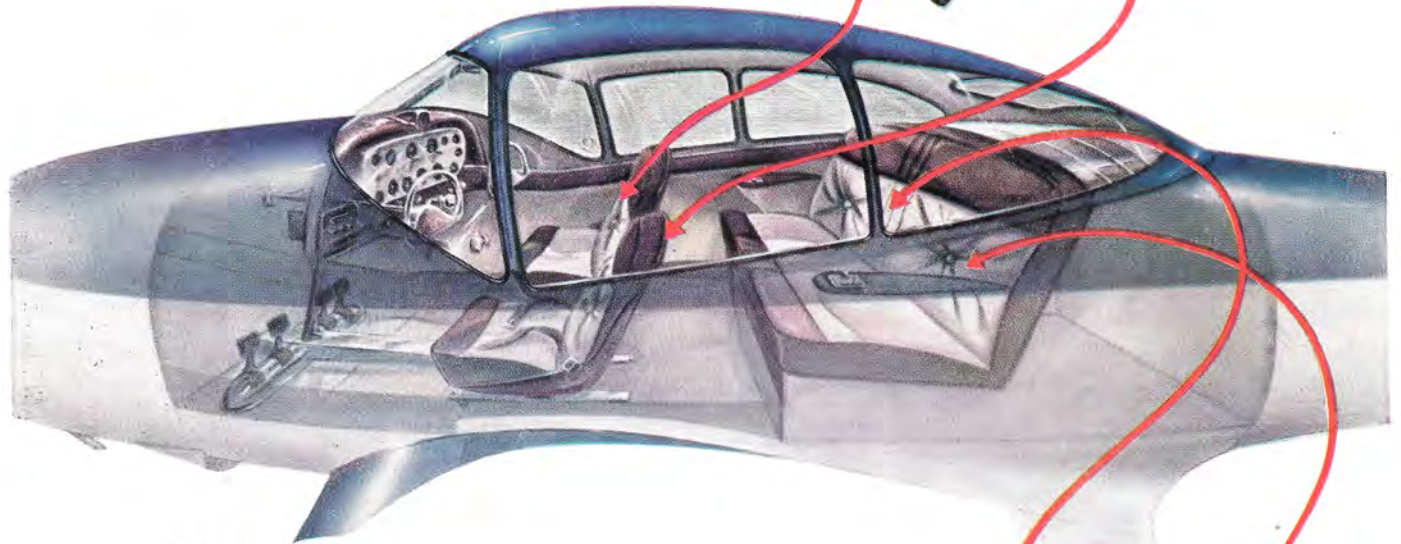
Gasoline mileage compares favorably with the average car.



Navion... with finest of styling

If you want the most in comfort, convenience and beauty—compare these *standard* luxury features with any other plane in the *Navion's* price class:

- Maximum cabin width 43 inches. Height of cabin 51¾ inches.
- “No-sag” spring and Airfoam upholstery in back seat with arm rests and ample leg room.
- Individually adjustable front seats with removable cushions.
- Rich, durable, two-toned seat covering and cabin lining. Thickly carpeted floor.
- Side-by-side dual wheel controls with detachable feature.
- Air-streamed, sliding cabin canopy for easy entrance and bulk loading.
- 360° cabin visibility with 12° pilot visibility over the nose—even on the ground.



- Cabin latch and lock.
- Diffused-air circulating ventilation system with provision for heater.
- A cabin so quiet that radio reception may be enjoyed from a speaker.
- Luggage compartment, spacious as the average sedan trunk... accessible in flight.
- Broad shelf for coats, hats, etc.
- Glove compartment and separate map case.
- Four built-in ash trays and automatic cigarette lighter.
- Rear-view mirror and interior lighting.
- Well-arranged and beautifully appointed instrument panel with indirect lighting on nine standard dials.
- Crystal-clear Lucite windshield and cabin windows.





Navion... with best all-purpose performance

Winning the acclaim of those who want efficient and economical flying locally and cross-country, the *Navion* combines both.

All the following performance* figures are based on flying with the maximum useful load:

TAKE-OFF: (No wind) Ground run—695 feet; over 50 foot obstacle—1,536 feet.

RATE OF CLIMB: (At sea level) 830 feet per minute.

CRUISING SPEED: 150 miles per hour at 75% normal rated horsepower.

MOST ECONOMICAL CRUISING SPEED: 115 m.p.h. at 51% normal rated horsepower.

LANDING SPEED: (No wind) 54 miles per hour with 40° flaps.

LANDING DISTANCE: (No wind) Ground run 605 feet; over 50 foot obstacle—1,129 feet.

RANGE: 700 miles at 115 miles per hour; 550 miles at 150 miles per hour.

SERVICE CEILING: 15,600 feet.

GREATER RANGE • GREATER SPEED • GREATER LOAD

**All performance figures are tentative, minimum estimates, pending C.A.A. Certification of model.*



Navion...with extra design features as standard equipment

Variable-pitch propeller.

Stylized engine grille.

185 h.p. CONTINENTAL 6 cylinder air-cooled engine.

Carburetor heat control.

Simplified engine cowl, hinged for easy accessibility.

Two interconnected 20 gallon fuel tanks.

Quick action electric starter, 25 amp. 15-volt generator and 12-volt, 34 amp.-hour storage battery.

Hydraulically-retractable tricycle landing gear...with steerable nose wheel.

Landing gear position indicator and warning horn.

Smooth action, hydraulic shock struts.

Equalized hydraulic brake system with parking brake.

All metal, semi-monocoque fuselage.

All metal horizontal and vertical stabilizers...with dorsal fin.

All metal rudder and trim tab.

All metal elevators and adjustable trim tabs.

All metal, full-cantilever, stressed skin wing.

All metal, hydraulically operated flaps.

All metal balanced ailerons.

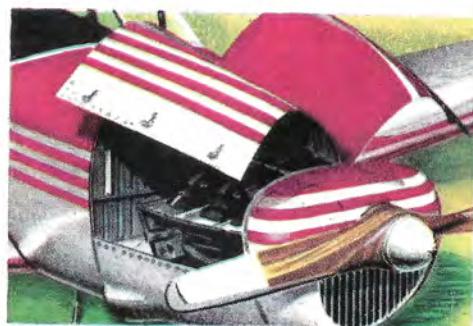
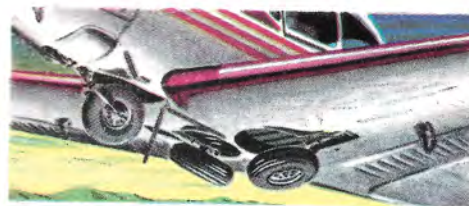
Built-in tie down and jack fittings.

Running lights.

Detachable wing tips.

All control surfaces are mounted on ball bearings.

The complete hydraulic system is operated by engine-driven pump.



Navion... with complete flying satisfaction

From the North American AT-6 and SNJ *Texans*, which composed more than 25 per cent of all U. S. wartime trainers, came the *Navion's* inherent stability.

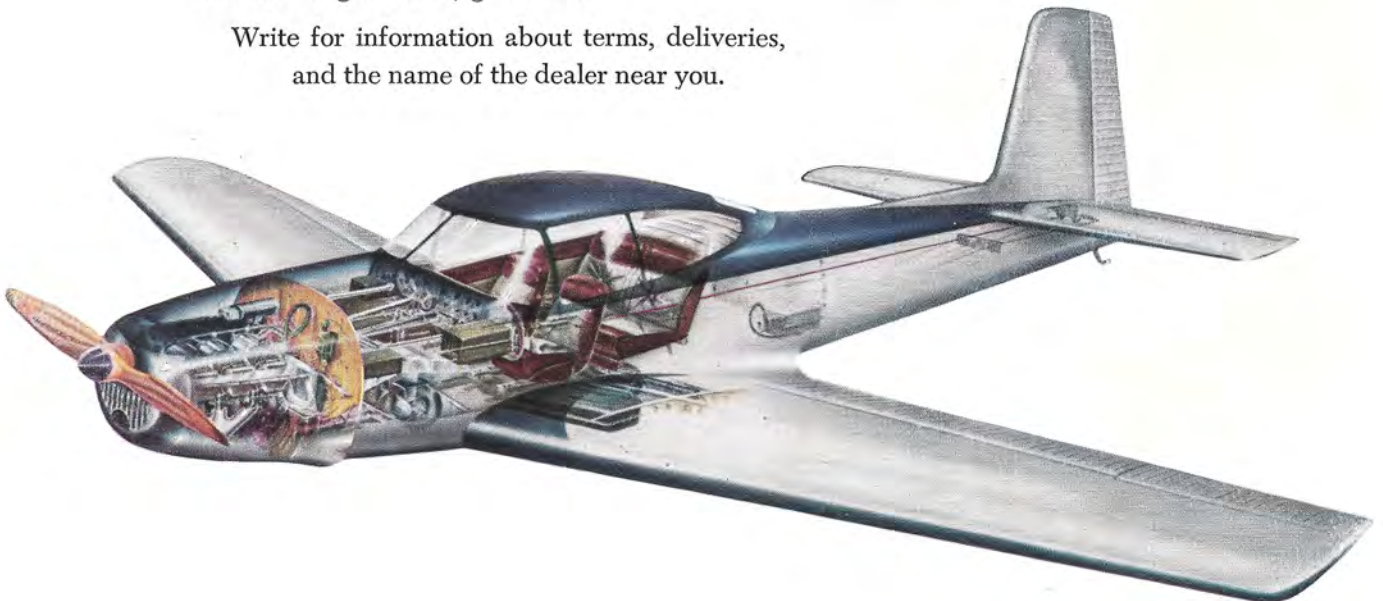
Getting behind the wheel of a *Navion*, the beginner can quickly and easily learn to fly. These *Navion* features make landings and take-offs simple: (1) Special wing design gives efficient aileron control at stalling speed... (2) Wide power range... (3) Hydraulically operated landing flaps... (4) Tricycle landing gear with steerable nose wheel... (5) Hydraulic shock-absorbers and brake system... (6) 360° pilot visibility... (7) Variable-pitch propeller.

The ease and comfort of flying the *Navion*, as a direct result of its perfect harmonization of controls, is surpassed only by the pleasure found in its lively power and speed. The *Navion* has full and positive maneuverability for flying at its best.



Owning and operating the *Navion* gives you the further satisfaction of low maintenance costs because of its rugged, all metal construction and the rapidly expanding nation-wide program of factory-trained personnel for *Navion* Service Stations. *Expressing North American's confidence in the Navion's design and workmanship, a new and exceptional 100 hour or 6 months manufacturer's warranty provides the owner a longer term of guarantee.*

Write for information about terms, deliveries,
and the name of the dealer near you.





WEIGHTS:

Gross weight.....	2700 lbs.
Empty weight.....	1630 lbs.
Useful load.....	1070 lbs.
4 people.....	680 lbs.
Luggage.....	80 lbs.
Fuel (40 gals.)....	240 lbs.
Oil (10 qts.).....	20 lbs.
Extra equip. (Approx.).....	50 lbs.

INSTRUMENTS: (Standard Equip)

Altimeter (non-sensitive)
Airspeed indicator
Tachometer
Oil pressure indicator
Oil Temperature indicator
Fuel gauge
Fuel pressure indicator
Ammeter
Magnetic compass

OPTIONAL EQUIPMENT AND SPECIAL ACCESSORIES:

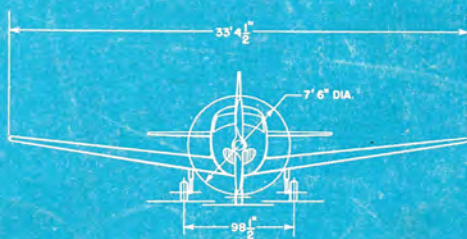
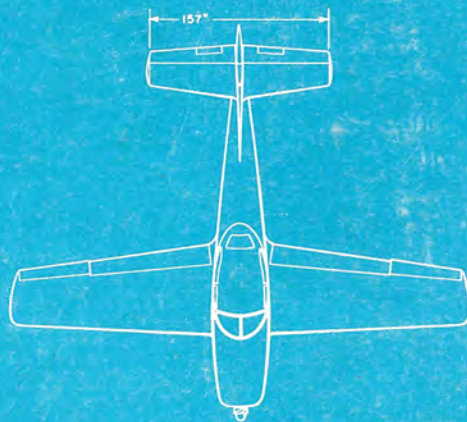
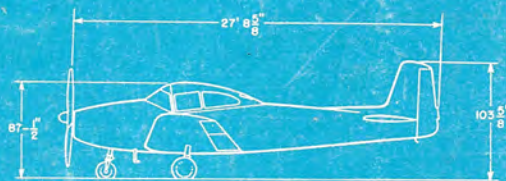
The items below can be purchased in the form of kits or installed at the factory. Every Standard Model comes equipped with all internal wiring, fittings, etc. for easy, inexpensive installation of each item and every *Navion* is built to give maximum flight performance when fully loaded with all extra kit equipment.

NIGHT FLYING KIT includes flares and landing lights.

TWO-WAY RADIO KIT includes transmitter, receiver, antenna, earphones, etc.

CABIN HEATER KIT composed of 20,000 B.T.U. per hour combustion heater.

NAVIGATION INSTRUMENT KIT includes turn and bank indicator, sensitive altimeter, and clock.



NORTH AMERICAN AVIATION INC.

LOS ANGELES MUNICIPAL AIRPORT, INGLEWOOD, CALIFORNIA

Flyaway factory deliveries of the *Navion* at Los Angeles Municipal Airport. Standard Model... \$6,100. f.a.f., plus California Sales Tax. North American Aviation, Inc. reserves the right to change specifications, design, and price referred to herein.

